

COFDM digital surveillance system

Features

Digital RX/TX of A/V data on a radio channel in range not less 800 m of direct visibility in urban area;

Two simultaneous operating channels with stereo: connection two PAL cameras, or one HD-camera.

Transmission of installed video surveillance cameras located at any distance by via Ethernet, network 3G / 4G (modem connection).

COFDM - H.264 with video and stereo audio.

Integrated control command receiver with respond.

Recording to the transmitter micro SD card .

Connected with ETHERNET, 3G / 4G modems and WiFi output module.

Availability for the virtual video server.

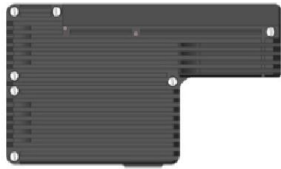
Transmission saved data remotely

Encryption key (option)



PARTS INCLUDED

Video Recorder



Receiver



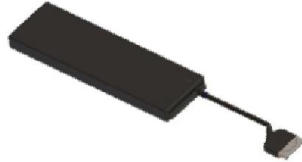
Automobile power unit



AC adapter for receiver



Transmitter



Remote Control



AC adapter with UPS function for transmitter



Power unit 12V



Directed antenna



Remote control antenna ANT435



Accumulator 5600 mAh



Programmer for video recorder



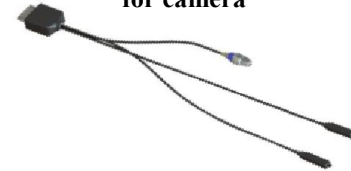
Antenna on magnetic base



Programmer for Transmitter



Two cables with stereo microphones and connector for camera



Adapter for USB connection



Case - packaging



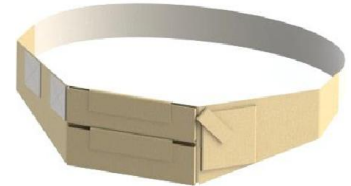
**Phones
KOSS PORTA PRO**



**Cardreader
"Transcend"**



Pectoral girdle



Cabel USB 2.0/AM mini



Flash card



**Patch cord Assman
SFTP 5e**



Accumulator 3000 mAh



Two analog cameras



Adapter ETHERNET



One HD camera

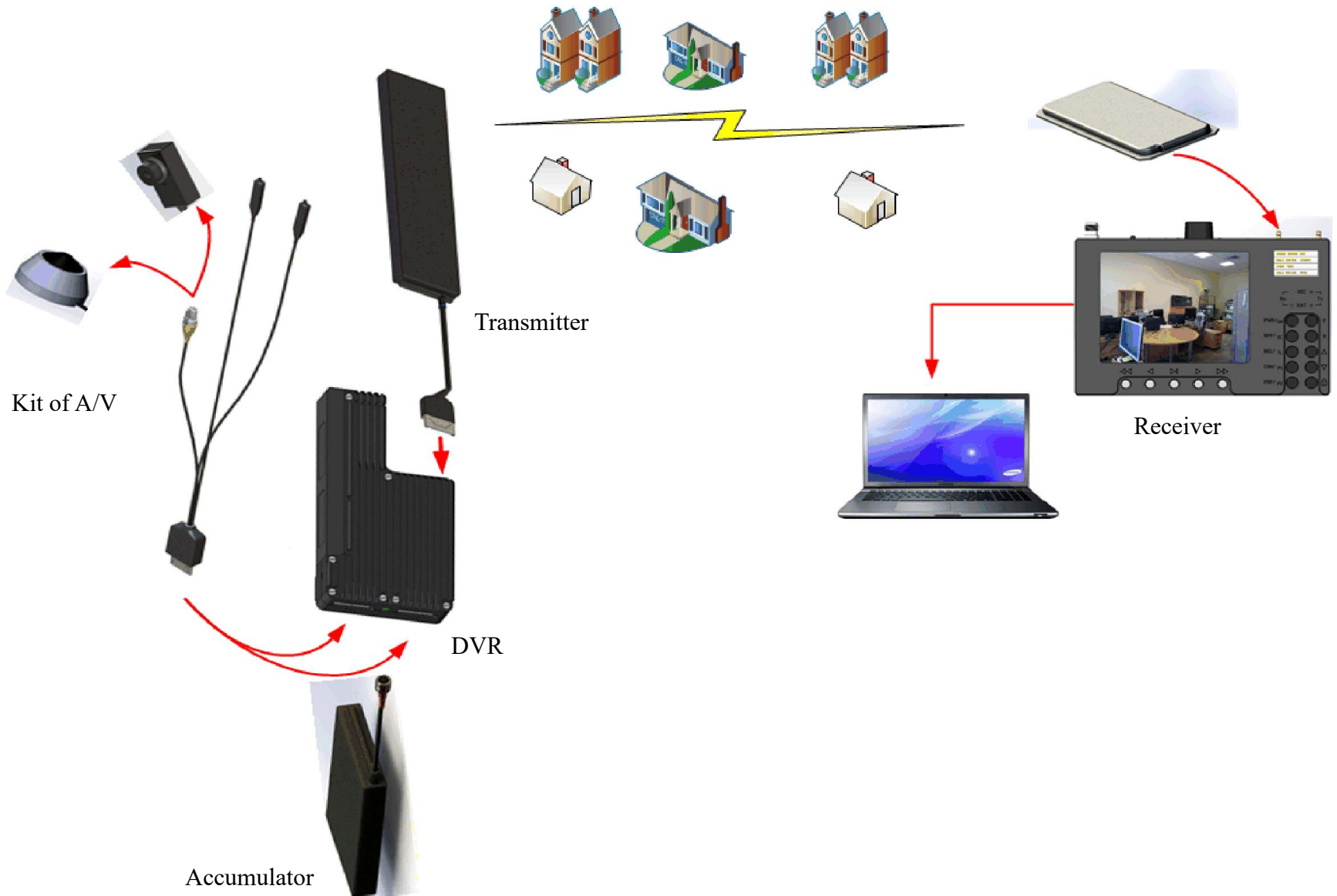


COFDM digital surveillance system //

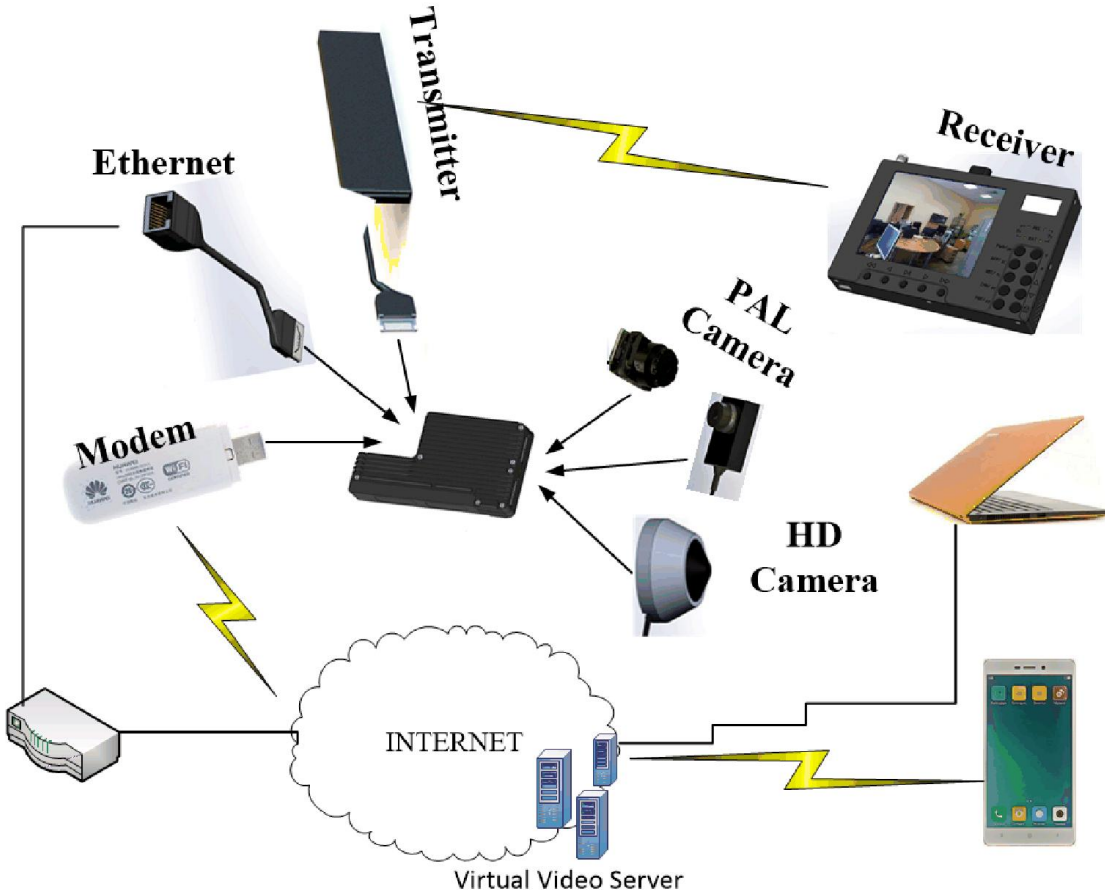
Technical specification

Receiver sensitivity	$\leq 2,5 \mu\text{V}$
Time to installation RX/TX channel	0,5 sec
Required time for recording 2Gb flash	1h
Frequency band (remote control)	429.00 ÷ 441,00 MHz
TX power (remote control)	$\geq -1\text{W}$
Power supply	9 ÷ 15V
Build-in accumulator	2 x 6300 mA/h
Battery life (without using remote)	no less 4 h
Dimension RX (without connectors)	210x140x30 mm
Frequency band (TX) – range installation	1000....1100 MHz
Output power TX	200 mW
Dimension TX (without cable)	110x27x7 mm
Weight TX	45g
Interface ETH, RS232TTL, HOST USB2.0 (for USB 3G/4G modems)	
Dimension DVR	44 x 37 x 12,5
Weight DVR	35 g

Applications



Applications



DVR
RF using
3G/4G modem using
ETHERNET connection
Virtual Video Server using
Two PAL cameras or one HD
Information store
<ul style="list-style-type: none">• To receiver
<ul style="list-style-type: none">• To PC
<ul style="list-style-type: none">• To any Android unit

Connecting scheme

